

SKD house connection box 160A, DIN 00 (gG)



SKD house connection box 160A



SKD house connection box 160A



SKD house connection box 160A

See below:

[Approvals and Compliances](#)

Description

- Glass fiber Polyester
- Difficult to burn
- Impact resistant IK07 (2J)
- Outside earth permanently mounted
- For indoor and outdoor
- For fixed installation

Unique Selling Proposition

- Additional protection covers for double terminal Woertz
- NH fuse-links with prisms + neutral disconnecter with straps, input side (4-wire system), tested for aluminium cable
- With 1 x 3 pole fuse switch disconnecter
- Prepared for 3 x 1 pole power circuit breakers

Characteristics

- With 3 x 1-pole fuse switch disconnecter
- Wide range of accessories
- Mounting and connection convenience thanks two-piece housing
- Bolt lock (4-kant with Slot)
- Protection 2-piece snap, transparent and sealable
- N-connector for TN-C to TN-S
- N-connector separating Piece self-opening when loosening the screw
- Voltage test possible only if fuse with not insulated straps used
- Earthing clamp for max 95mm² copper cable

References

custom specific versions on request
 Alternative: Other rated current [SKD 63A](#)

Weblinks

[pdf data sheet](#), [html datasheet](#), [Detailed request for product](#)

Customer Specific Solutions

The fresh design and the strikingly smaller installation depth of 2 cm immediately attract attention the first time you look at the house connection box. The new interior is protected by the cover with a square bolt lock with slot. The internal contact protection of the SKD house connection box is provided by snap-on, transparent and lockable inner covers, which can be removed without tools. Of course, the SKD house connection box is also well prepared for the future of the grid. The SKD is also equipped for 3-pole switching elements or 1-pole high-performance automatic switches.



The inlet and outlet covers can be easily sealed.



Cover panels



NH fuses Voltage testing of NH fuses with non-insulated handles possible through hinged window

Technical Data

| | |
|------------------------------------|----------------|
| Rated Current Ie | 160 A @ 500VAC |
| | 125 A @ 690VAC |
| Rated voltage Ue | 690VAC |
| Rated isolation voltage Ui | 1000VAC |
| Rated Power Operating Frequency fe | 50Hz |
| Rated diversity factor RDF | 0.70 |

| | |
|--|----------------------------------|
| Rated Impulse Withstand Voltage Uimp | 8 kV |
| Conditioned Rated Short Circuit Current | 50 kA @ 690VAC |
| | 80 kA @ 500VAC |
| Rated short-time withstand current with fuse links | 20 kA @ 500VAC |
| Allowed Ambient Temperature | -25°C to +40°C acc. to IEC 61439 |
| Protection by closed housing | IP54 acc. to IEC 60529 |
| Pollution Degree | 3 |

Terminals

| | |
|--|-----------------------|
| NH-Fuse-Link with Screw Terminal for Cable Log | M8 |
| NH-Fuse-Link with Prisms | 6 - 95mm ² |

| | |
|----------------------------------|-----------------------|
| Neutral Disconnecter with Straps | 6 - 95mm ² |
| Earth Connection Bride | 6 - 95mm ² |
| Double terminal | 6 - 50mm ² |
| Earth Connection | 6 - 50mm ² |
| Earth Connection (outside) | M8 |

Prisma strap: radius small 6 - 25 mm² / radius big 35 - 95 mm²

NH-Switch disconnecter

| | |
|---|----------------|
| Fuse-Link | DIN 00 |
| Rated Current Ie | 160 A @ 500VAC |
| | 125 A @ 690VAC |
| Rated voltage Ue | 690VAC |
| | 220VDC |
| Rated isolation voltage Ui | 1000VAC |
| Rated Power Operating Frequency fe | 50Hz |
| Rated Impulse Withstand Voltage Uimp | 8kV |
| Conditioned Rated Short Circuit Current | 80kA @ 500VAC |
| | 50kA @ 690VAC |

| | |
|--|-----------------|
| Category of use AC | AC-23B @ 400VAC |
| | AC-22B @ 500VAC |
| | AC-21B @ 690VAC |
| Category of use DC | DC-22B @ 220VDC |
| Rated power dissipation without NH fuse-links at Ith | 2.3 W |
| Protection class | IP20 |
| Mechanical lifetime | 1400 Insertions |
| Electrical lifetime | 200 Insertions |
| Ambient Temperature Tu**) | -40°C to +55°C |

**) A reduction of the rated current is required above 30°C


Approvals and Compliances

Detailed information on product approvals, code requirements, usage instructions and detailed test conditions can be looked up in [Details about Approvals](#)

Approvals




The approval mark is used by the testing authorities to certify compliance with the safety requirements placed on electronic products.

Approval Reference Type: SKD 160A

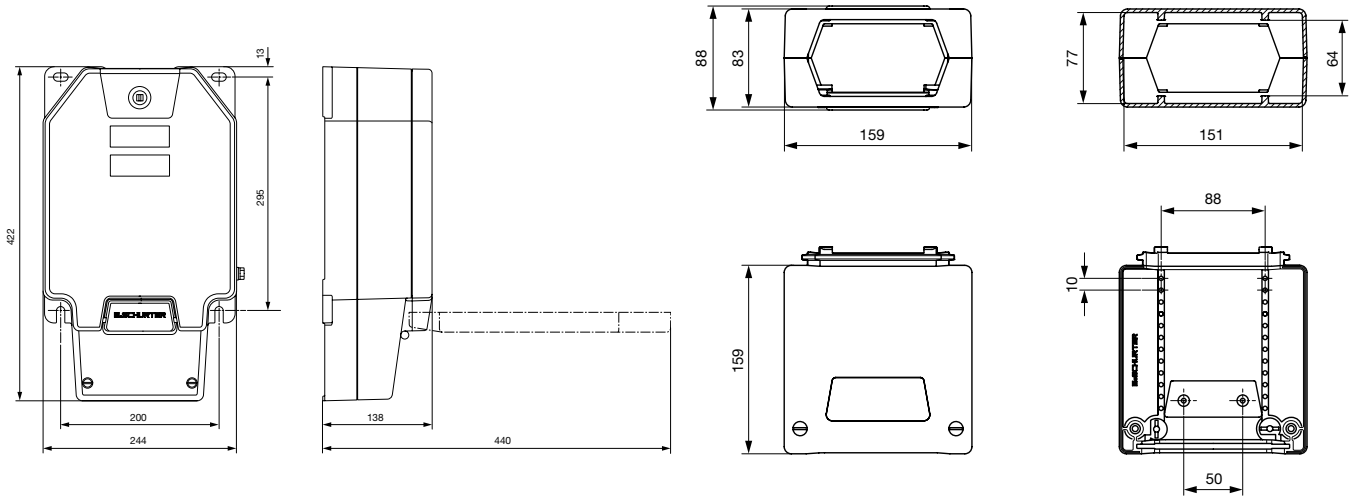
| Approval Logo | Certificates | Certification Body | Description |
|--|------------------------------------|--------------------|-----------------------------|
|  | Eurofins Approvals | Eurofins | Certificate Number: IK-4271 |

Compliances

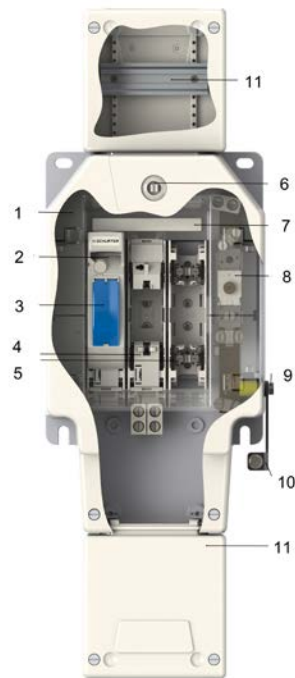
The product complies with following Guide Lines

| Identification | Details | Initiator | Description |
|--|--|-------------|---|
|  | CE declaration of conformity | SCHURTER AG | The CE marking declares that the product complies with the applicable requirements laid down in the harmonisation of Community legislation on its affixing in accordance with EU Regulation 765/2008. |
|  | UKCA declaration of conformity | SCHURTER AG | The UKCA marking declares that the product complies with the applicable requirements laid down in the British Amendment of Regulation (EC) 765/2008. |
|  | REACH | SCHURTER AG | On 1 June 2007, Regulation (EC) No 1907/2006 on the Registration, Evaluation, Authorization and Restriction of Chemicals 1 (abbreviated as "REACH") entered into force. |

Dimensions [mm]



Assembly Instructions



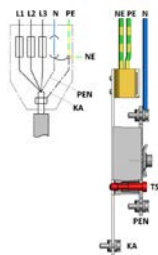
1. two-part cover plates, snapped, transparent and sealable
2. NH fuse switch disconnectors
3. hinged window
4. internal covers
5. different connection variants- Prismabride- Cable lug M8- Double terminals
6. Square lock
7. marking strips
8. neutral conductor isolator for TN-S/TN-C
9. external ground connection permanently mounted
10. Earth bracket (optional)
11. expansion module with DIN rail (optional)

12. 63A- Fuse element with touch protection and various connection variants



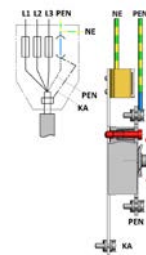
Diagrams

TN-S (delivered condition)



L = Pole conductor
 PE = Protective conductor
 N = Neutral conductor
 NE = Neutral earth conductor
 TS = Separating screw
 KA = Cable armor

TN-C



L = Pole conductor
 PE = Protective conductor
 N = Neutral conductor
 NE = Neutral earth conductor
 TS = Separating screw
 KA = Cable armor

All SKD house connection boxes from SCHURTER AG are equipped with the versatile neutral conductor isolator. The neutral conductor isolator is suitable for use in networks with earthing according to the TN-S and TN-C diagrams. The connection type can be changed by simply repositioning the separating screw.

All Variants

| Designation | Equipped | Terminal | Order Number | E-No. |
|-----------------------|--|---------------------|--------------|-----------|
| SKD 160A DIN00+0+E | - | Screw connection M8 | 0009.3008 | 827255028 |
| SKD 160A DW DIN00+0+E | - | Double Terminal | 0009.3004 | 827255038 |
| SKD 160A DIN00+0+E | - | Prisms strap | 0009.3003 | 827255028 |
| SKD 160A DIN00+0+E | Cable bride 1 x 38 mm, Rubber, Cover 1 x M40 | Prisms strap | 0009.3028 | 827255068 |
| SKD 160A DIN00+0+E | Cable bride 1 x 38 mm, Rubber, Cover 1 x M40 + 1 x M16 | Prisms strap | 0009.3016 | 827255058 |
| SKD 160A DIN00+0+E | Cable bride 1 x 38 mm, Rubber, Cover 1 x M50 + 1 x M16 | Prisms strap | 0009.3038 | 827255048 |
| SKD 160A 3P DIN00+0+E | - | Prisms strap | 0009.3005 | 1) |
| SKD LS+0+E | - | - | 0009.3006 | 2) |

Most Popular.

Availability for all products can be searched real-time: <https://www.schurter.com/en/Stock-Check/Stock-Check-SCHURTER>

¹⁾ 1 x 3 pole fuse switch disconnecter

²⁾ without power circuit breakers

Packaging unit

1 Pcs

Accessories

Description



[Cover_Plates_160A](#)
Cover Plates for SKD 160A



[Fuse_element_160A](#)
Fuse Element for SKD 160A



[Screw_Connection](#)
Screw Connection for Fuse Element 160A



[Terminal_Cover](#)
Terminal cover for SKD 25A, 63A and 160A



[Covers_SKD_25_60_160_A](#)
Covers for SKD 25A, 63A and 160A



[Cable_Bride](#)
Cable Bride for SKD 25A, 63A and 160A



[Rubber](#)
Rubber for SKD 25A, 63A and 160A

Description



[Expansion_Module](#)
Expansion Module for SKD 25A, 63A and 160A



[Earth_Clip](#)
Earth Clip for SKD 25A, 63A and 160A



[N-Conductor](#)
N-Conductor for SKD 25A, 63A and 160A